

## English loanwords adaptation into Khowar

**Sami Ullah Khan**

*Assistant Professor, Faculty of English languages and literature  
Lasbela University, Uthal Balochistan  
[samiluawms@gmail.com](mailto:samiluawms@gmail.com)*

**Dolat Khan**

*Assistant Professor, Faculty of English languages and literature  
Lasbela University, Uthal Balochistan  
[dkbaloch\\_1@yahoo.com](mailto:dkbaloch_1@yahoo.com)*

**Munir Khattak**

*Assistant Professor, Faculty of English languages and literature  
Lasbela University, Uthal Balochistan  
[smkhattak822@gmail.com](mailto:smkhattak822@gmail.com)*

**Ms. Nigar Gul**

*Lecturer, Faculty of English languages and literature  
Lasbela University, Uthal Balochistan  
[nigargul2@gmail.com](mailto:nigargul2@gmail.com)*

### Abstract

*This research work deciphers English loanwords adaptation in Khowar language. It explored that the selected words gone through different adaptable variations in terms of phonology when borrowed from English. Qualitative method is used in this study. Data was collected from real-life conversation of 20 Khowar native speakers in Pakistan. Participants were comprised of educated and non educated class of Khowar speakers. Findings of the study show that English loanwords went through different phonological processes such as epenthesis, substitution, deletion and addition when borrowed into Khowar. It is also discovered that the process of deletion is least occurred and substitution mostly occurred phenomenon. Furthermore, this study explored the reason poor pronunciation of English and way out solution to improve it.*

**Keywords:** Khowar, Pronunciation, Loanword, English, Phonology

### 1. Introduction

Words travel and become part of another language so, such process of movement involved many factors such as social, political and economics. When Muslims came to

indo-Pak along with they brought their languages with them but later on, English dominated over Persian and Arabic when step-in to the sub-continent in the form of East India Company (Rehman, 2012). The existing of the foreign languages in the form of Persian, Arabic and English made the local languages impure and mixed consequently, the local speakers were compelled to speak English but the influence of the mother tongue due to the factor of interlanguage, affected English as a second language speakers (ESL). Persian was the official language of Chitral till 1972 when Chitral was a separate state therefore; Persian terms are visibly seen in the Khowar literature and naturally an alien language carries its impact too. When English came to the sub-continent new words are added to the regional language but in the mean time it has replaced the indigenous words finally, those terms are no more used in the Khowar language.

Every second person in Pakistan is bilingual because Pakistan is linguistically rich country specifically more than fourteen languages are spoken in Chitral (Decker, 2004). Khowar is dominant language of Chitral of Khyber Pakhtunkhwa province of Pakistan. However, in the some parts of Gilgit, Khowar is also spoken such as Yasin, Ghizar and surrounded areas. English being the second language of Pakistan, it has influenced not only other regional languages of Pakistan but Khowar too. There are many English loanwords intruded into Khowar which are commonly observed among the educated and non educated speakers of Khowar. Loanwords are the result of contact language from one to another (Crystal, 2008). The basic reason of borrowing is need and prestige which is due to lexical gap or short of literary terms and certain lexis are taken from other language in order to fill the gap of the language. Other reason of borrowing is prestige where people are attracted and conscious about prestigious words in other language, therefore, they tend to borrow high esteemed words (Mahmood & Hassan, 2011). Pakistan is a rich country in terms of languages where fifty nine minor and six major languages are spoken. The major languages are Pashto, Panjabi, Sindhi, Urdu and English. English enjoys the status of official language since British invasion through East India Company. Since then, English is an official language of Pakistan. It is also used in the educational institution of Pakistan as medium of instruction therefore, educated and elite section English is widely used as a second language. The roots of English in India before the partition stretches back in seventeenth century when British came to India for 'trade' purposes since then; English is used in Pakistan as (ESL) in Pakistan. The influence of English deeply penetrated in all section of the society even among the uneducated people in Pakistan which is observed in the words they commonly used in their conversations.

### ***1.1 Statement of the problem***

Khowar has borrowed number of English words and such loanwords undergone with number of changes because of the influence of Khowar language.

### ***1.2 Objective of the study***

1. Find out loanwords in Khowar

2. Finding out phonological changes of English words in Khowar.

### **1.3 Research questions**

1. Which English loanwords borrowed in Khowar?
2. What type of adaptation method is applied on English loanwords?

### **1.4 Significance of the study**

This study investigates English loanwords which has become part of Khowar. It can help English as foreign language (EFL) students and teachers to correct their pronunciations. However, this research work can help to explore such linguistics issues of its kinds.

### **1.5 Limitation of the study**

This study is limited to English loanwords in Khowar and to find phonological changes brought by Khowar speakers.

## **3. Literature review**

According to Sipra (2013) borrowing take place in three different forms such as borrowing with no or minor change, Second, translating the loanwords into current language. Third cause of loan is mixing the foreign language with the local language. According to Al-Qinal (2002) there are two ways of borrowing. One way of borrowing is adoption where the foreign words go without phonological changes. In addition, original form or pronunciation of the loanword remains intact. The second term he used is adaptation, in which loanwords face certain change phonologically. There are some other process of adaptation such as assimilation, substitution, addition, epenthesis and deletion. The phonology of Khowar and English vary from each other. According to Roach (2010) English is categorized into forty four phonemes which are comprised of twenty vowels and twenty four consonants. However, vowels are further divided into short, long vowel and diphthongs. Short vowels are seven and long vowels are five and diphthongs are eight in numbers.

According to Liljegren and Khan (2016) there are 41 consonants and five vowels in Khowar. However, Khowar posses no diphthongs and triphthongs. Moreover, Khowar does not carry complex consonant clusters at coda and onset position whereas English allows complex clusters at coda and onset positions. Handsome amount of work is done on loanwords phonology in recent times. Among the recent work on loanword are: *phonological treatment of vowels in English loanwords by Saraiki speakers* (Atta, Syed, & Bughio, 2017), *Mandarin Chinese* (Miao, 2005), *issues in loanword adaptation, and phonotactic adaptation of English loanwords in Arabic* (Al-Athwary, 2017). The aforementioned studies urge to know the phonological process incorporated in Khowar. So, current study will fill the gap of English loanwords in Khowar.

## **4. Research methodology**

### **4.1 Data collection and method**

The way of research method is used in this study is qualitative and descriptive to explore English loanwords borrowed into Khowar. Data collected from the spontaneous

conversation in general gathering where the conversation is recorded. The selected words of English and Khowar are transcribed through the international phonetic association (IPA).

#### 4.2 Population and sample

Native speakers of Khowar belong to different social backgrounds but less educated and illiterate population for study. The sample of 20 Khowar native speakers is selected for the study. Khowar borrowed words from other languages too such as Urdu, Persian and Pashto but this study confined to English loanwords only.

#### 4.3 Transcription

All the selected lexis of English transcribed according to oxford English online dictionary whereas Khowar words are transcribed according to the native production. The data is presented in graph one along with serial number, English transcription, Khowar transcription, distance value and gloss.

#### 4.5 Framework

Levenshtein (2014) distance algorithm used to compare the pronunciations of English loanword and Khowar. This algorithm differentiates the difference between two words from zero or minimum to maximum number of sounds changed in the form of substitution, epenthesis and deletion.

Graph 1. English loanwords in Khowar (transcription)

Serial No.	English	Khowar	Distance Value	Gloss
1	/pen/	pen	0	Pen
2	/test/	test	0	Test
3	/teɪbl/	teɪbl	0	Table
4	/kʌp/	kʌp	0	Cup
5	/məʊbaɪl/	məʊbaɪl	0	Mobile
6	/laɪt/	laɪt	0	Light
7	/bætəri/	bætəri	0	Battery
8	/bʊk/	bʊk	0	Book
9	/ɔfɪs/	ɔfɪs	0	Office
10	/fæn/	fæn	0	Fan
11	/bʌtn/	bʌtn	1	Button
12	/glɑ:s/	gəla:s	1	Glass
13	/kɑ:d/	ka:t	1	Card
14	/treɪnɪŋ/	treɪnɪ	1	Training
15	ʃæmpu:	ʃæmpɪhu:	1	Shampoo
16	həʊtel	hɔtel	1	Hotel
17	/læptap/	lɔptap	1	Laptop
18	/faɪl/	faɪl	2	File
19	/pɒkɪt/	pəkɪt	2	Packet
20	/kɒpi/	kɔpɪ	2	Copy
21	/bɒks/	bəkɪs	2	Box

22	/mɪʃənəri/	məʃnəri	2	
Missionary				
23	/haspɪtl/	haspətal	2	Hospital
24	/bɒtl/	bɒθa:l	2	Bottle
25	/pleɪt/	pəlet	2	Plate
26	/prəʊgræm/	pərgra:m	2	Program
27	brʌʃ	bʌrʌʃ	2	Brush
28	bæg	bək	2	Bag
29	bɔ:d	bət	2	Board
30	si:lɪŋ	sɪli:ŋ	2	Ceiling
31	letə(r)	letz: r	2	Letter
32	peɪp(r)	pəpa:r	2	Paper
33	rəʊd	rɒt	2	Road
34	/bred/	brat	2	Bread
35	/sku:l/	ɪskʌl	2	School
36	/kəʊt/	kət	2	Coat
37	/mæstər/	mæftər	2	Master
38	/nəʊvembər/	nʌvmba: r	2	
November				
54	bætəri	bɪdri	2	Battery
39	/oprəʃn/	əbrəʃn	3	
Operation				
40	/dɒktə(r)/	dəkθa:r	3	Doctor
41	/paʊdə(r)/	pʌdɛ:r	3	Powder
42	məʊtə(r)	mɔtɛ:r	3	Motor
43	ma:kə(r)	mərka:r	3	Marker
44	/septembə(r)/		sɪtamba:r	3
September				
45	/æksɪdnt/	əksɪda:n	3	Accident
46	/təlɪfəʊn/	təlɪhu:n	3	
Telephone				
47	/træktə(r)/	təkta: r	3	Tractor
48	kləʊs	kʌlu:z	3	Close
49	/stu:dnt/	ɪstəda: n	4	Student
50	/laʊdspɪ:kə(r)/	ləspɪka:r	4	
Loudspeaker				
51		sərendə(r)	sələnda:r	5
Surrender				
52	/blʌd prɛʃə(r)/	brəkɔʃa: r	6	Blood
pressure				

53                                    /kəndʌktə(r)/                                    kələndɛ:r                                    6  
Conductor

## 5. Data analysis

Graph one indicates distance values of loanwords of English in Khowar. However, different distance values which indicates variations of values such as zero distance value indicates no change in phoneme of the word. Each number of variations ranging from one to six shows the process of loanwords adaptation. Data is described on the basis of different categories such as deletion, substitution, epenthesis and deletion.

### 5.1 Zero change

According to Levenshtein distance value when there is a zero change in phoneme when borrowed, similarly the serial number one to ten are not changed when borrowed from English to Khowar. They produced with same pattern by Khowar speakers as English native speakers.

### 5.2 Change one and more

Words from the serial number 11 to 17 go under one phonological change. So, this phonological change could be the reason of addition or substitution, deletion or epenthesis. Detail analysis is given below:

### 5.3 Substitution

In the process of substitution one sound in a word is exchanged with another as it can be seen that some vowel sounds are replaced with other vowel sound. Examples from the graph one as under:

- a. In serial No. 13 English dental voiced plosive (d) is replaced with English voiceless plosive (t) as in the *card*.
- b. English diphthong (eɪ) and nasal (n) is substituted with lateral fricative (ɬ) as in the word *training*.
- c. English vowel /æ/ is substituted with English short vowel /ə/ in the word *laptop* (serial No. 17) of initial syllable of the word.
- d. English diphthong /əʊ/ is replaced with short vowel /ɒ/ in the first syllable in the Khowar production of English loanword *hotel* (sr. no. 16).
- e. English loanword *pocket* initial syllable sound /ɒ/ is substituted in Khowar with the English vowel /ə/. English vowel /ɪ/ in the second syllable of the word is also substituted with the vowel /ə/ of English (sr. no. 19).
- f. English consonant /d/ is substituted with consonant /t/ at coda position in English loanword *board* (sr. no 29).
- g. English short vowel is /ɪ/ is replaced at final syllable /i:/ of English loanword *ceiling* (sr. no. 30).
- h. English diphthong /əʊ/ is substituted with short vowel /ɔ/ in the word *coat* in serial number 36.
- i. English voiceless fricative /s/ is replaced with post alveolar fricative /ʃ/ mentioned in the word *master* (sr. no. 37).

#### 5.4 Epenthesis

Epenthesis occurs when extra sound is added into the existing sound of the word. Sounds are added by Khowar native speakers to the English loanwords as given below:

- i. Short vowel /ʌ/ inserted in the first syllable of English loanword of consonant clusters of English word *brush* (sr. no. 27).
- ii. English short vowel /e/ is added into the word *button* (sr. no. 11)
- iii. English short vowel /ə/ is added into the word *glass* in the first syllable and the reason is Khowar lacks consonant cluster at initial position the word (sr. no. 12).
- iv. Pharyngeal sounds /h/ is added into the word of English loanword of *shampoo* at final syllable before long vowel (sr. no. 15).
- v. English loanword *copy* is epenthized Pharyngeal sounds /h/ is inserted in the final syllable (sr. no. 20).
- vi. English short vowel /ɪ/ is inserted between cluster at final syllable of English loanword *box* and the word in Khowar is produced as *bəkis* (sr. no. 21).

#### 5.5 Double Epenthesis

In the process of double epenthesis, two vowels sounds are inserted in the same word English loanword by Khowar so, such examples are as under:

- i. Second syllable of the English loanword *hospital*, vowel /ə/ and also in the last syllable vowel /a/ is added between the clusters (sr.no.23).

#### 5.6 Epenthesis and Substitution

This process includes new sound insertion and replacement with another sound of English loanword. Examples are given below:

- i. English alveolar voiceless stop /t/ is substituted with voiceless dental fricative /θ/ and consonant cluster at coda position and long vowel /a:/ is inserted between the final syllable cluster of the English loanword *bottle* (sr.no.24).
- ii. English short vowel /ə/ is inserted between consonant cluster at onset position and diphthong /eɪ/ is substituted with short English vowel /e/ in English loanword *plate* (sr. no. 25).
- iii. English short vowel /ɪ/ is added at onset position and long vowel /a:/ is replaced with short vowel /ʌ/ at final position of the word *school* sr. no. 35).

#### 5.7 Insertion and Deletion

1. English short vowel /ɔ/ is inserted in the first syllable of the cluster of English loanword *program* and last syllable /r/ is deleted in the final position (sr. no. 26).

#### 5.8 Double Substitution

Khowar have made double replacement in one word of English loanword such as:

- i. English vowel /æ/ is replaced with /e/ and voiced velar stop /g/ is substituted with voiceless velar stop /k/ of English loanword *bag* (sr. no. 28).
- ii. English short vowel /ə/ is substituted with long vowel /ɜ:/ and palatal-alveolar approximant /r/ is prominent in Khowar and in British English /r/ is silent at coda position of English loanword *letter* (sr. no.31)

- iii. English diphthong /eɪ/ is replaced with English short vowel /ə/ in the first syllable and the second syllable of the word English short vowel /ə/ is replaced with long vowel /a:/ along with prominent /r/ in the word *paper*.
- iv. English diphthong əʊ is substituted with English vowel /ɒ/ and alveolar voiced stop /d/ is replaced with alveolar /t/ in the word *road* (sr. no. 33).
- v. English vowel /e/ is replaced with /a/ and alveolar voiced stop /d/ is replaced with alveolar voiceless stop /t/ in the word *bread* (sr. no. 33).
- vi. English diphthong /əʊ/ substituted with English short vowel /ʌ/ and short vowel /ə/ is replaced with long vowel /a:/ in the word *november* (sr.no.38).
- vii. English short vowel /o/ is replaced with short vowel /ə/ and bilabial stop /p/ is replaced with bilabial stop /b/ in English loanword word *operation* (sr. no. 40).
- viii. English diphthong /aʊ/ is replaced by short vowel /ʌ/ in the first syllable and short vowel /ə/ is replaced by long vowel /ɛ:/ with prominent /r/ at coda position of English loanword word *powder* (sr. no. 42).
- ix. English diphthong /əʊ/ is replaced with short vowel /a/ short vowel /ə/ is replaced with long vowel /ɛ:/ along with alveolar approximant /r/ of English loanword *motor* (sr. no. 43).
- x. English long vowel switched into short vowel /ə/ and short vowel of English /ə/ replaced with long vowel /a:/ in addition with alveolar approximant /r/ of English loanword *marker* (sr. no. 44)
- xi. Post alveolar approximant /r/ is replaced with lateral approximant /l/ in the first syllable and short vowel /ə/ replaced with long vowel /a:/ in the second syllable of English loanword *surrender* (sr. no. 51).

### 5.9 Addition and Double Substitution

- i. English short vowel /ʌ/ is added in the cluster of consonants at onset position and English diphthong /əʊ/ is substituted with long vowel /u:/ however, voiceless dental fricative /s/ is substituted with voiced dental fricative /z/ at coda position of English loanword *close* (sr. no. 48).

### 5.10 Triple Substitution

In this process English loanwords undergo three times substitution in Khowar which are:

1. English short vowel /ɒ/ is replaced with short vowel /ɔ/, voiceless alveolar stop /t/ is replaced with voiceless dental fricative /θ/ and short vowel /ə/ replaced with long vowel /a:/ of English loanword *doctor* (sr. no. 40).
2. English vowel /ɜ/ is substituted with short vowel /ə/ in first syllable and labiodental fricative /f/ is substituted with glottal /h/ and diphthong /əʊ/ is replaced with long vowel /u: in the second syllable of English loanword *telephone* (sr.no.46).
3. English diphthong /aʊ/ is substituted with short vowel /ə/ and in the second syllable long vowel i: is substituted with short vowel /ɪ/ and in the third syllable short

vowel /ə/ is replaced with long vowel /a:/ of English loanword *loudspeaker* (sr. no. 50).

### **5.11 Double Substitution and Deletion**

i. English short vowel /ə/ replaced with short vowel /ɪ/ and voiceless bilabial /p/ is deleted another substitution of short vowel /e/ with /a/ of English loanword *September* in Khowar sr. no. 44).

ii. English vowel /æ/ is substituted with short vowel /ə/ at onset position and short vowel /ə/ is substituted with long vowel /a:/ and voiceless alveolar stop /t/ is deleted in English loanword *accident* (sr. no. 45).

iii. English alveolar approximant /r/ is deleted and vowel /æ/ is substituted with short vowel /ə/ in the first syllable and short vowel /ə/ is substituted with long vowel /a:/ with prominent alveolar approximant /r/ of English loanword *tractor* (sr.no.47).

### **5.12 Double Epenthesis and Substitution**

This process involves two insertions of sounds and one replacement of sound with another in one English loanword when transferred into Khowar:

i. Addition short vowel /ɪ/ at onset position and long vowel /u:/ is replaced with short vowel /ə/ and long vowel is added before nasal /n/ and alveolar stop is added at coda position in English loanword *student* in Khowar (sr. no. 49)

### **5.13 Triple Substitutions and Deletion**

I. Lateral approximant /l/ is replaced with post alveolar approximant /r/ and short vowel /ʌ/ is replaced with another short vowel /ə/ and voiced alveolar stop is replaced with voiceless velar stop /k/ in the first syllable however, in the second syllable alveolar approximant /r/ is deleted and short vowel /ə/ is substituted with long vowel /a:/ of English loanword *blood pressure* in Khowar (sr. no. 52).

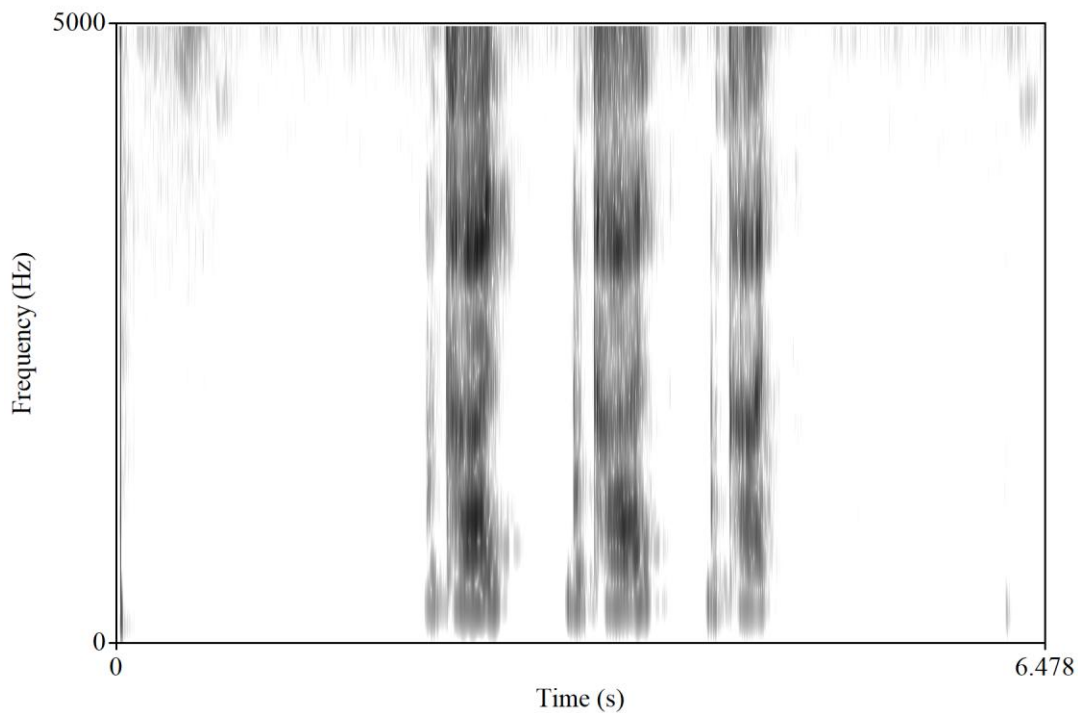
### **5.14 Substitution, Deletion and Double Addition**

i. English lateral approximant /l/ and short vowel /ə/ are added before nasal sound in the first syllable and short vowel /ʌ/, velar stop /k/ and alveolar stop are deleted in the second syllable whereas short vowel /ə/ is substituted with long vowel /ɛ:/ in English loanword *conductor* (sr. no. 53).

There are certain reasons happened to discover during data collection. First reason is, Khowar is not a versatile language which can fulfill all the requirement of a language. Many lexical gapes are realized therefore, Khowar speakers tend to use English loanwords to fill the gap. Meanwhile, the use of English causes interlanguage and intra-language errors. These errors are due to the lack of paying attention towards pronunciation on the part of the students and teachers in English language classrooms. Particularly, educational institutions need to pay more attention on pronunciation at primary level and teachers should be trained with proper English language training. Due to the poor training, teachers are unaware about the proper pronunciations neither they

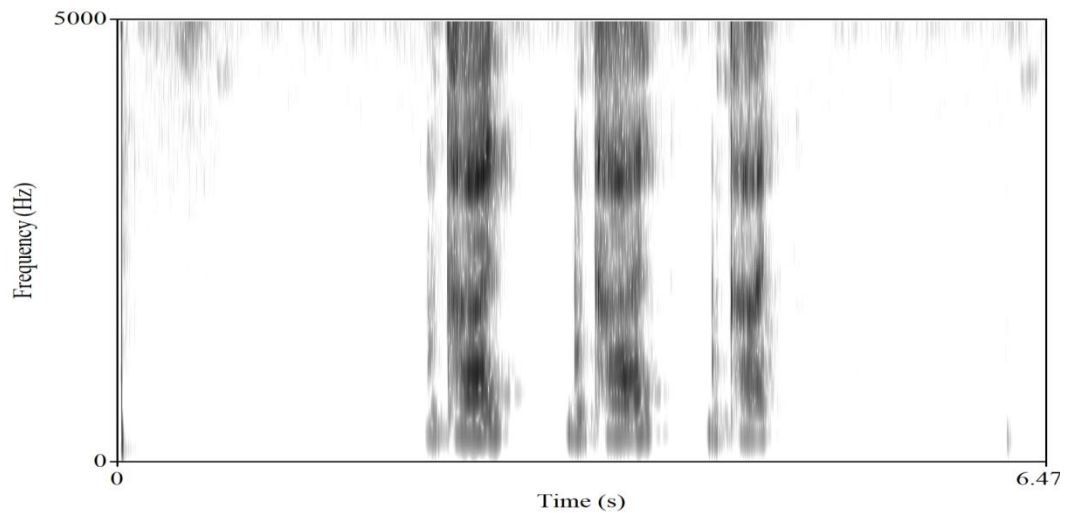
know the difference of first and second language phonemes. Teachers cannot realize the pronunciation they adopted and the actual pronunciation of English therefore; they transfer not the actual pronunciation to the students. Therefore, serious attention is needed towards correction of pronunciation both English teachers and students that need of proper teacher training and modern pedagogical method to be adopted.

Graph: 2 Khowar production of English loanword *bottle* as *bvθa:l*



Graph: 3 English pronunciation of *bottle*





## 6. Conclusion

English being the second language in Pakistan, Khowar speakers took the help of English loanwords to fill the gap. The following loanwords entered into Khowar via different phonological strategies such as epenthesis, substitution, addition and deletion. Study shows that among the phonological processes the act of substitution took place of English loanwords more in Khowar. Study further posits that a English word changed from zero to six phonological process when borrowed into Khowar. English loanwords enriched Khowar language but it will pose problems for Khowar English learners because such pronunciations errors as this study bought to surface, is not acceptable pronunciation of actual British English as it can be considered as part of world Englishes. English teachers need to learn pronunciation of English words otherwise faulty pronunciation students will learn. This paper presents the words routed into Khowar via English. It is found that certain change of pronunciation is found not only in monolinguals, but also in bilinguals and the educated class of Khowar speakers. The educated class 'has' some knowledge of pronunciation of English therefore, they distinguished some differences.

## References

- Al-Qinal, J. B. (2002). Morphophonemics of loanwords in translation. *Journal of King Saud University*, 13, 1–132.
- Atta, F., Syed, N. A., & Bughio, F. A. (2017). A Phonological Treatment of Vowels in English Loanwords by Saraiki Speakers. *ELF Annual Research Journal*, 19, 43–62.

- Al-Athwary, Anwar AH. "The semantics of English borrowings in Arabic media language: The case of Arab gulf states newspapers." *International Journal of Applied Linguistics and English Literature* 5.4 (2016): 110-121.
- Crystal, David. *A dictionary of linguistics and phonetics*. Vol. 30. John Wiley & Sons, 2011.
- Decker, Kendall Don. *Languages of Chitral*. National Institute of Pakistan Studies, Quaid-i-Azam University, 2004.
- Garcia, M. I. M., & Yapici, M. (2014). Common Vocabulary in Urdu and Turkish Language: A Case of Historical Onomasiology. *Pakistan Vision*, 15(1), 193.
- Kachru, B. B. (1994). Englishization and Contact Linguistics. *World Englishes*, 13(2), 135–154. <https://doi.org/10.1111/j.1467-971X.1994.tb00303.x>.
- Lamel, Lori, et al. "Speech transcription in multiple languages." *2004 IEEE International Conference on Acoustics, Speech, and Signal Processing*. Vol. 3. IEEE, 2004.
- Liljegen, Henrik, and Afsar Ali Khan. "Khowar." *Journal of the International Phonetic Association* 47.2 (2017): 219-229.
- Levenshtein, V. (1966). Binary Codes Capable of Correcting Deletions, Insertions, and Reversals. Paper presented at the Soviet physics doklady.
- Mahmood, R., Hussain, Q., & Mahmood, M. A. (2011). Phonological Adaptations of English Words Borrowed into Punjabi. *European Journal of Social Sciences*, 22(2), 234–245.
- Roach, P. (2010). *English Phonetics and Phonology: A practical course* (4th ed.). New Delhi, India: Cambridge University Press.
- Miao, Ruiqin. *Loanword adaptation in Mandarin Chinese: Perceptual, phonological and sociolinguistic factors*. Diss. 2005.
- Masica, C. P. (1993). *The Indo-Aryan Languages*. Cambridge University Press.
- Rehman, Sumaira, and Muhammad Azam Roomi. "Gender and work- life balance: a phenomenological study of women entrepreneurs in Pakistan." *Journal of small business and enterprise development* (2012).
- Sipra, M. (2013). A Linguistic Study of Borrowings from English to Urdu. *International Journal of Applied Linguistics & English Literature*, 2(1). <https://doi.org/10.7575/ijalel.v.2n.1p.203>